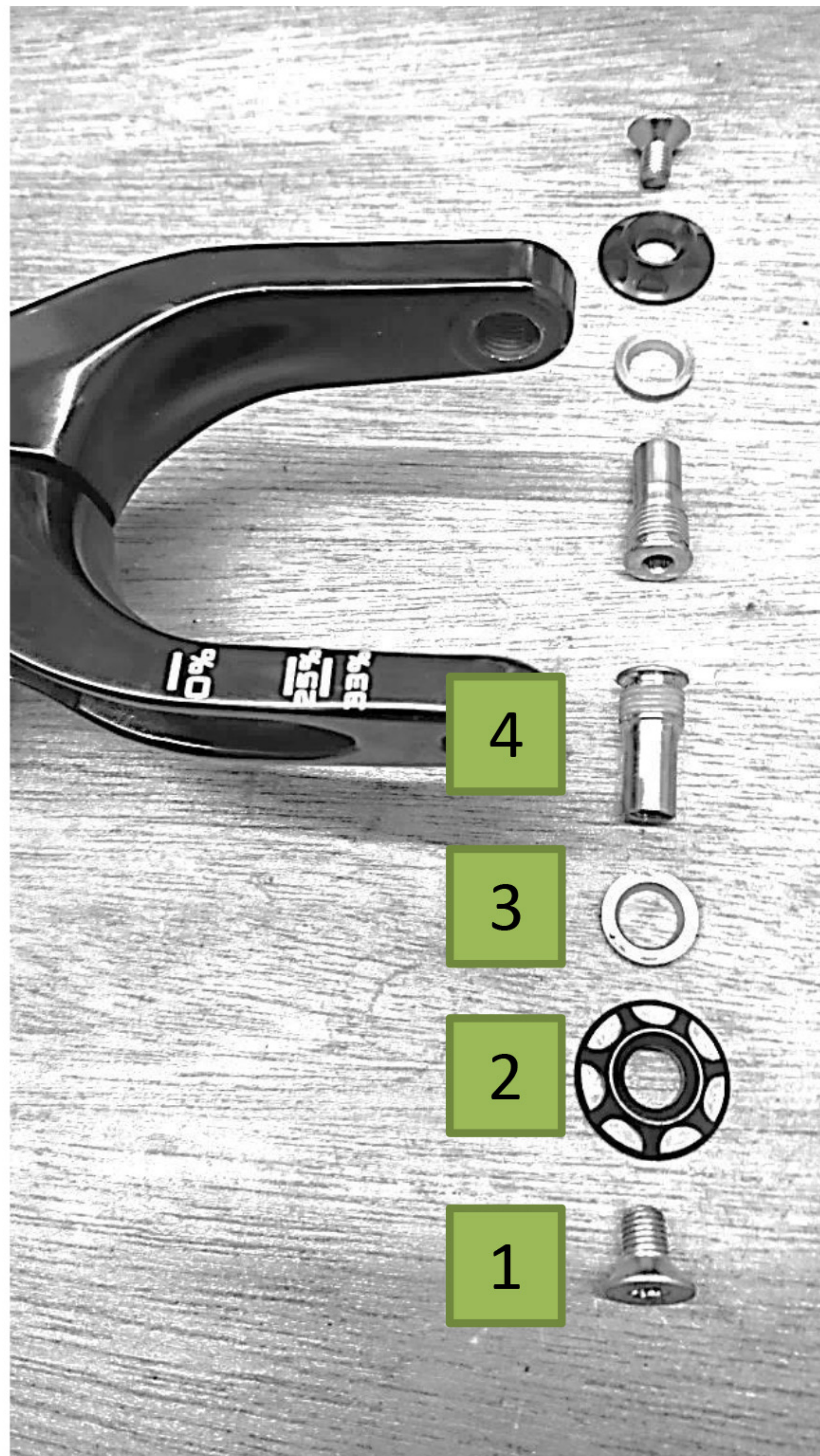


BikeYoke - Installation on Enduro/Enduro EVO 2010-2102

Installing your Bikeyoke on a Specialized Enduro/Enduro EVO 2010-2012 requires a little bit more attention to the right procedure, so we want to give you a small guide for installing to this frame model.

Be careful, when installing to not damage any threads of your mounting hardware or your BikeYoke!



You will need to use your original hardware to mount the BikeYoke to your frame.

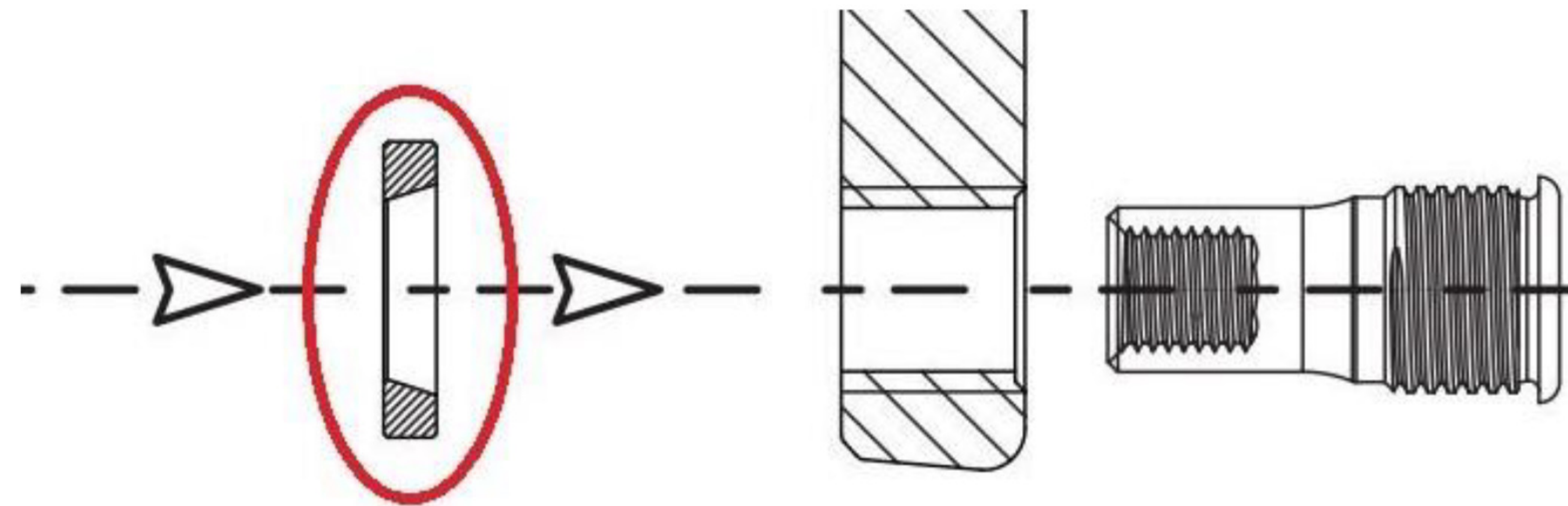
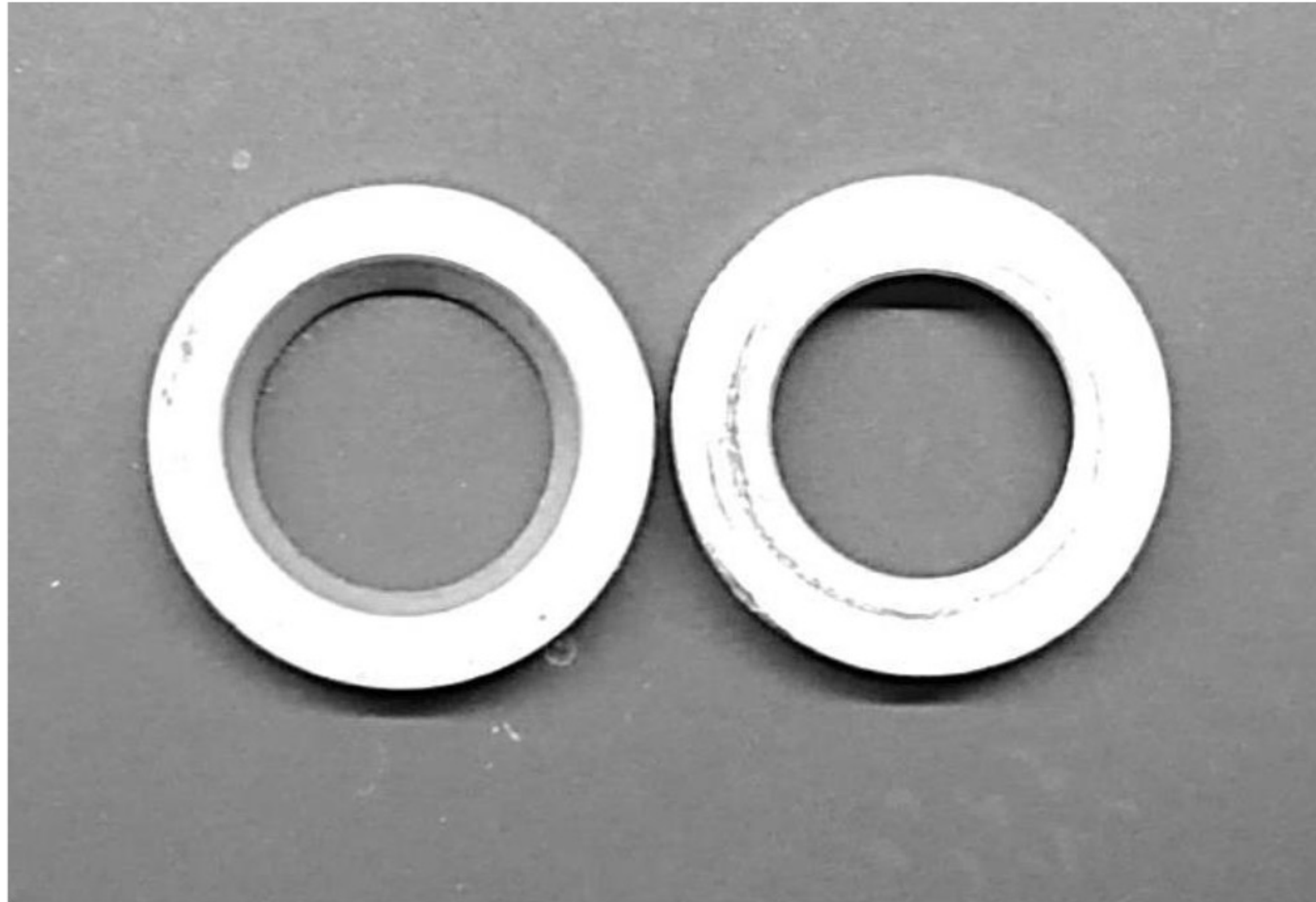
Remove your original clevis and make sure you have all the mounting hardware you need for installing your BikeYoke:

1. clevis bolt
2. clevis outer washer
3. clevis spacer
4. clevis axle

BikeYoke - Installation on Enduro/Enduro EVO 2010-2102

The clevis spacers have a chamfered side and a flat side

- flat side faces the bearing !!!
- chamfered side faces the BikeYoke !!!



- Apply some thick grease on the flat side of the spacer
- Place the spacer with the flat side on the bearing inner race
- The grease will help the spacer stick to the bearing

BikeYoke - Installation on Enduro/Enduro EVO 2010-2102



- Apply blue Loctite on the clevis axle
- Install the first clevis axle on one side, using a long Torx T-25 tool to reach in through the bearing from the other side. This makes it easier to align the axle correctly to the thread. Make a few turn, but do not tighten completely
- Install the second clevis axle and tighten with a axleTighten both axles alternately until both have tight and correct fit
- Finally tighten both axles with 13-15Nm
- Then put the clevis outside washer on the bearing outer side and install

BikeYoke - Installation on Enduro/Enduro EVO 2010-2102



- Install the second clevis axle using a ratched tool or an L-shaped Torx T-25 tool
- Turn in both axles alternately until both have tight and correct fit
- Tighten both axles with 13-15Nm
- Finally apply blue Loctite on the clevis bolt and install together with the outside washer. Tighten the clevis bolt with 13-15Nm